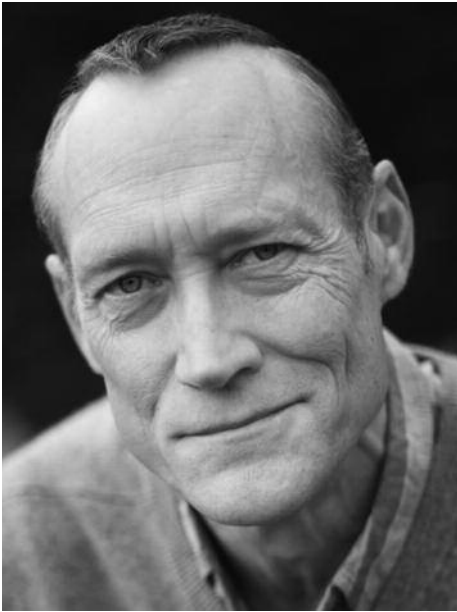


TheatreWorks  
S I L I C O N V A L L E Y

*The  
Pitmen Painters*

WHO'S WHO

About the Cast & Creative Team



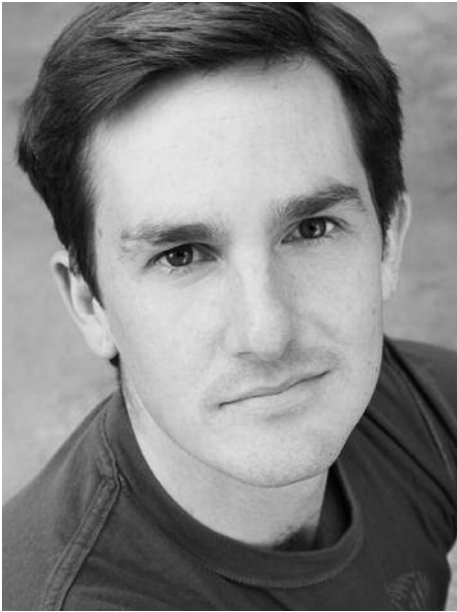
**JAMES CARPENTER** (George) appeared in TheatreWorks' *The Heidi Chronicles* and *The Night of the Iguana*. He has performed in over 30 productions at Berkeley Repertory Theatre and has appeared at American Conservatory Theater, Marin Theatre Company, Aurora Theatre Company, San Jose Repertory Theatre, and Shakespeare Santa Cruz. He is an Associate Artist with California Shakespeare Theatre, playing the title role in last years' *Titus Andronicus*. Other regional credits include Arizona Theatre Company, Huntington Theatre, Intiman Theatre, The Old Globe, Oregon Shakespeare Festival, and Yale Repertory Theatre. He is the 2007 recipient of Bay Area Theatre Critics Circle's Barbara Bladen Porter Award for Excellence in the Arts and is a Lunt-Fontanne Fellow. Mr. Carpenter's film and TV credits include *Nash Bridges*, the films *Metro* and *The Rainmaker*, and the independent projects *Singing*, *Presque Isle*, and *The Sunflower Boy*.



**JACKSON DAVIS** (Jimmy) has worked with TheatreWorks for many years in a variety of roles spanning musicals, comedies, and dramas, most recently in *Opus* and this summer's New Works Festival production of *Little Rock*. He has also worked with American Conservatory Theater (*Happy End*, *Hans Christian Anderson*), San Jose Repertory Theatre (*Mizlansky/Zilinsky*, *The Caine Mutiny Court-Martial*), Aurora Theater Company (*The Best Man*), Marin Theatre Company (*Lovers & Executioners*, *Company*), Magic Theatre (*God of Hell*), SF Playhouse (*Dead Man's Cell Phone*, *First Day of School*), San Jose Stage Company (*Lost in Yonkers*), 42nd Street Moon (*Ben Franklin in Paris*, *Pipe Dream*) and City Lights Theatre Company (*The Return to Morality*).



**DAN HIATT** (Harry) has appeared at TheatreWorks in *The 39 Steps*, *Twentieth Century*, *Ambition Facing West*, *Spinning into Butter*, and *Psychopathia Sexualis*. Other Bay Area appearances include *Round and Round the Garden*, *Happy End*, *The Rivals*, *Rosencrantz and Guildenstern are Dead*, and *The Matchmaker* at American Conservatory Theater; *Joe Turner's Come and Gone*, *Menocchio*, and *Dinner with Friends* at Berkeley Repertory Theatre; *A Christmas Carol*, *This Wonderful Life*, *A Flea in Her Ear*, *Sylvia*, and *The Immigrant* at San Jose Repertory Theatre; and *Pastures of Heaven*, *Uncle Vanya*, *Richard III*, and *Nicholas Nickleby* at California Shakespeare Theatre. Mr. Hiatt has also performed at theatres across the country, including Seattle Repertory Theatre, Huntington Theatre, Ford's Theatre, Studio Arena Theatre, Arizona Theatre Company, Idaho Shakespeare Festival, and Stage West in Toronto.



**PATRICK JONES** (Oliver) is making his TheatreWorks mainstage debut. He performed in the 2010 New Works Festival in *How to Write a New Book for the Bible* and *Variations on a Theme*. Recent Bay Area credits include *Bellwether* (Marin Theatre Company), *Metamorphosis* (Aurora Theatre Company), *Exit, Pursued by A Bear* (Crowded Fire), and *The Real Thing* (Livermore Shakespeare Festival). Other national credits include *Cymbeline* and *Misalliance* (New York Classical Theater), *Step One: Plays with Instructions* (The 52nd Street Project, NYC), *You Can't Take It with You* (Denver Center), *The Lieutenant of Inishmore* and *In the Belly of the Beast* (Florida Studio Theater), *A Number* (The Northern Stage, Vermont), *Vincent in Brixton* (The Cleveland Play House), and *Arms and the Man* (Great Lakes Theater Festival). Mr. Jones earned his MFA in Acting from Case Western Reserve University.



**NICHOLAS PELCZAR** (Young Lad/Ben Nicholson) is proud to be making his TheatreWorks debut. He last appeared in *The Glass Menagerie* (Tom) at Marin Theatre Company where he also appeared in *boom*. Other Bay Area credits include *War Music*, *Rock 'n' Roll*, and *A Christmas Carol* at American Conservatory Theater; *Much Ado About Nothing*, *Macbeth*, *The Life and Adventures of Nicholas Nickleby*, *Othello*, *Titus Andronicus*, *Taming of the Shrew*, *All's Well That Ends Well*, and *The Importance of Being Earnest* at California Shakespeare Theater; *4 Adverbs with Word for Word*; *Hamlet* and *As You Like It* at Pacific Repertory Theatre; *A Midsummer Night's Dream* at San Francisco Shakespeare Festival; and *Marius* and *Dublin Carol* at Aurora Theatre Company. He is a graduate of the American Conservatory Theater MFA acting program.



**MARCIA PIZZO** (Helen) was last seen in *Eccentricities of a Nightingale* at Aurora Theatre Company. Prior to that, she appeared as Cleopatra in *Antony and Cleopatra* at Marin Shakespeare Company, where she also played Kate in *Taming of the Shrew*, Rosalind in *As You Like It*, Lady Macbeth in *Macbeth*, Roxanne in *Cyrano de Bergerac*, and Beatrice in *The Servant of Two Masters*. Other Bay Area credits include *Round and Round the Garden*, *Rock'n'Roll*, and *A Mother* with Olympia Dukakis (American Conservatory Theater); *Restoration Comedy*, *Two Gentlemen of Verona*, *The Merchant of Venice*, *King Lear*, and *The Tempest* (California Shakespeare Theater); the world premiere of *First Day of School* (SF Playhouse); *The Women* (Marin Theatre Company); and *Picasso at the Lapin Agile* (Theatre on the Square). Ms. Pizzo is a graduate of the ACT Advanced Training Program.



**PAUL WHITWORTH** (Robert Lyon) began his acting career at the Royal Shakespeare Company (1976–1982). At Shakespeare Santa Cruz he played many Shakespearean leading roles. Other acting credits include *Pygmalion* (Henry Higgins) at Seattle Repertory Theatre, *Who's Afraid of Virginia Woolf?* (George) and *Copenhagen* (Bohr) at Syracuse Stage, *Night and Day* (George) at American Conservatory Theater, *Blue/Orange* (Robert Smith) at Aurora Theatre Company, *Shining City* (John) at San Francisco Playhouse, *Krapp's Last Tape* (Krapp) at Jewel Theatre, and *The Life of Galileo* (Galileo) at Asolo Repertory Theatre and Cleveland Play House. Mr. Whitworth's directing credits include the world premiere of *The Rape of Tamar* at Lyric Hammersmith, London; and *Family Butchers* and *Triptych* at Magic Theatre, San Francisco. Educated at Repton School, St. Andrews, and Oxford Universities, he was Artistic Director of Shakespeare Santa Cruz (1996–2007).



**KATHRYN ZDAN** (Susan) most recently originated the role of The Doll in *Bellwether* at Marin Theatre Company. Other Bay Area credits include *Lend Me a Tenor* (Diana) and *Romeo and Juliet* (Lady Capulet) at Livermore Shakespeare Festival, *Disassembly* (Ellen) at Impact Theatre, *Forever Never Comes* (Dylan) at Crowded Fire, *Oliver!* (Nancy) at Berkeley Playhouse, *This World in a Woman's Hands* (Wendy) with Shotgun Players, *Cabaret* (Frau Kost) at Center REpertory Company, and *Engaged* (Parker) at Shakespeare Santa Cruz. Nationally, Ms. Zdan has performed with the Dell'Arte Company and internationally with the Amsterdam based street performance group Warner & Consorten. She earned her BFA from the University of California, Santa Barbara and her MFA from the Dell'Arte International School of Physical Theatre.



**LEE HALL** (Playwright) was nominated for an Oscar for the screenplay of *Billy Elliot* and won the Tony and Drama Desk Awards for Best Book of a Musical for the musical adaptation as well as the Evening Standard and Olivier Awards for Best Musical. His plays include *Cooking With Elvis* (nominated for an Oliver Award), *Spoonface Steinberg*, and adaptations of *The Good Hope*, *Leonce and Lena*, *Mother Courage*, *A Servant to Two Masters*, *Mr. Puntila and His Man Matti*, and *The Barber of Seville*. He has worked extensively with BBC for both television and radio. Mr. Hall co-wrote a television adaptation of Jane Austen's *Pride and Prejudice* and *Wind in the Willows*. He also wrote the screenplay for the Steven Spielberg film *War Horse* (2011) and is working on a stage version of Pink Floyd's *The Wall*.



**LESLIE MARTINSON** (Director) is TheatreWorks' Associate Artist and Casting Director. For TheatreWorks, her directing credits go back over twenty years, including, most recently, the West Coast premieres of *Superior Donuts* and *Theophilus North*. A graduate of Occidental College, she has been a Watson Fellow in political theatre, a member of Lincoln Center Directors' Lab, a member of the LaMaMa International Directing Symposium and has served on Theatre Bay Area's Theatre Services Committee since 2002. She was awarded an Individual Artist Fellowship in Stage Direction from the Arts Council of Silicon Valley for artistic achievement and community impact. In addition to directing, she leads master classes and workshops and teaches in the Musical Arts department at Notre Dame de Namur University.

**ANDREA BECHERT** (Scenic Designer) has designed 22 productions for TheatreWorks including *Snow Falling on Cedars*, *To Kill a Mockingbird*, *Twentieth Century*, *Twelfth Night*, *Dolly West's Kitchen*, *Bat Boy: The Musical*, *Night of the Iguana*, *Floyd Collins*, and *Talley's Folly*. She has designed scenery for theatres across the country including Berkeley Repertory Theatre, Colorado Shakespeare Festival, American Musical Theatre of San Jose, The Starlight Theatre, The Stardust Casino in Las Vegas, Opera San José, and Center REpertory Company. Her awards include three Bay Area Theatre Critics Circle Awards, a Denver Ovation Award, and her designs have been included in the 2005 World Design Expo and 1996 Prague Quadrennial. She has taught at or been a guest at several universities including Stanford University, Ohio University, and University of Wisconsin. Ms. Bechert is a member of United Scenic Artists Local 829.

**JOYCE DAVIDSON** (Assistant Stage Manager) most recently assistant stage managed for TheatreWorks' *Clementine in the Lower 9*. She had stage managed on the national tours of *Billy Elliot* and *Mamma Mia!* as well as *Blue Man Group-Live* at Luxor in Las Vegas. Regionally she has stage managed workshop productions of *Venice*, *Ken Roht's Nutcracker*, and *Sam Bendrix at the Bon Soir* for Center Theater Group in Los Angeles, as well as eight seasons at the La Jolla Playhouse in San Diego. She is a proud member of Actors' Equity Association.

**JIM GROSS** (Projections Designer) is pleased to be working with TheatreWorks on *The Pitmen Painters*. Mr. Gross has previously worked with scenic designer Joe Ragey and projection designer Jason H. Thompson on projections for TheatreWorks's *Sense and Sensibility* and *Distracted*, respectively. Mr. Gross also designed the projections for *Mr. Marmalade* and the world premiere of *Waiting to Dance*, both at Renegade Theatre Experiment, where he also served as production manager for five years. He is the Assistant Production Manager for TheatreWorks and an alumnus of Santa Clara University.

**WILLIAM LIBERATORE** (Vocal Arrangement & Direction) is TheatreWorks' resident musical director having conducted more than twenty shows including *The Secret Garden*, [title of show], *A Christmas Memory*, *Grey Gardens*, *Merrily We Roll Along*, *Harold and Maude*, *Crowns*, *My Antonia*, *Jane Eyre*, *Ragtime*, and *Pacific Overtures*. He was the musical director at American Musical Theatre of San Jose, conducting over 30 shows including *Flower Drum Song*, *Little Shop of Horrors*, *Gypsy*, *A Chorus Line*, *42nd Street*, *Follies*, *Children of Eden*, and *Crazy For You*. Mr. Liberatore has won Bay

Area Theatre Critics Circle Awards for *A Little Night Music*, *South Pacific*, and *Damn Yankees* (AMTSJ) and *Bat Boy; Into the Woods; Emma*; and *Caroline, or Change*; and *The Light in the Piazza* (TheatreWorks). He is also the choral director at Gunn High School, and is proudly conducting Symphony Silicon Valley's Broadway in Concert Series.

**JAMIE D. MANN** (Stage Manager) stage managed TheatreWorks' *Clementine in the Lower 9*, *Fly By Night*, *Snow Falling on Cedars*, *The 39 Steps*, *Superior Donuts*, and *Wild with Happy* and *Fly By Night* in TheatreWorks' New Works Festival. He also stage managed the world premiere of *Mrs. Whitney* (Magic Theatre); *2 X Malmud—The Jewbird* and *The Magic Barrel* (Word for Word/The Jewish Theatre); *The Last Yiddish Poet* (The Jewish Theatre); and *Sunrise at Campobello* (Willows Theatre Company). He was production manager at San Jose Stage Company, stage managing *Dirty Blonde*; *Rock N' Roll*; *The Great America Trailer Park Musical*; *Always...Patsy Cline*; *Altar Boyz*; *Blade to the Heat* (with Thick Description); *The Diary of Anne Frank*; and *Beehive, The Musical*. He graduated from the University of California, Santa Cruz in Theatre Arts.

**STEVEN B. MANNSHARDT** (Lighting Designer) has been the lighting designer for over 60 productions at TheatreWorks, having won numerous Bay Area Theatre Critics Circle Awards and Dean Goodman Choice Awards for his work. His regional design credits include Long Wharf Theatre, New Haven; A Contemporary Theatre, Seattle; American Repertory Theater, Cambridge; Studio Arena Theatre, Buffalo; Magic Theatre; Pasadena Playhouse; The Weston Playhouse Theatre Company, Vermont; Vancouver Playhouse Theatre Company; and Olympia Theatre, Dublin, Ireland. Mr. Mannshardt also serves as the technical director and resident designer at San Francisco Shakespeare Festival and previously taught lighting design at Santa Rosa Junior College for 14 years. Formerly the production manager at TheatreWorks, he now runs an organization dedicated to improving the education system for both children and adults in Nepal. [www.nepal.wwep.org](http://www.nepal.wwep.org)

**B. MODERN** (Costume Designer) is delighted to return to TheatreWorks where she designed *The 39 Steps*, *Superior Donuts*, *The Chosen*, and *Third*. Regional theatre design credits include productions for Oregon Shakespeare Festival, The Globe Theatres, San Jose Repertory Theatre, Magic Theatre, Shakespeare Santa Cruz, American Players Theatre, Wisconsin; Geva Theatre, New York; Asolo Repertory Theatre, Florida; Indiana Repertory Theatre; Repertory Theatre of St. Louis; Georgia Shakespeare Festival, Idaho Shakespeare Festival; Center REpertory Company; and Syracuse Stage. Opera credits include productions at Opera Theatre of St. Louis and Opera San José. She has received four Drama-Logue Awards, three Dean Goodman Choice Awards, and a Bay Area Theater Critics' Circle Award. Ms. Modern is an Associate Artist at Shakespeare Santa Cruz, and at Geva Theatre. She shares a home and studio with two cantankerous cats.

**KIMBERLY MOHNE HILL** (Dialect Coach) has served as Dialect Coach on over 16 shows for TheatreWorks, including *Snow Falling on Cedars*, *The North Pool*, *Doubt*, *Theophilus North*, *Arcadia*, *Jane Eyre*, *Baby Taj*, and *Anna in the Tropics*, to name a few. An Assistant Professor in Acting at Santa Clara University she continues to teach, direct, and coach throughout the Bay Area. Ms. Hill recently appeared onstage in San Jose Repertory Theatre's production of *A Christmas Carol* as Mrs. Cratchit and Mrs. Fezziwig, and directed *reasons to be pretty* and *The Seafarer* at San Jose Stage Company. She has published two books with Smith & Kraus: *Scenes in Dialect for Young Actors* and *Monologues in Dialect for Young Actors*. Volume II of both books are due out soon.

**GREGORY ROBINSON** (Sound Designer) has produced sound designs for several TheatreWorks' productions including, *Snow Falling on Cedars*, *Living Out*, *You Can't Take It With You*, *An American Daughter*, *Be Aggressive*, and *Present Laughter*. Throughout the past three decades, his sound

design, sound effects, music, and recording have been featured in local, regional, and national radio and television advertisements, documentaries, corporate video, and theatre. He has created and produced for AC Transit, Amazing People LLC (London), Bank of America, California Lottery, Carlos & Deborah Santana, HBO/ Comic Relief, Ivory Coast Pictures (Hollywood), Lorraine Hansberry Theatre, Magic Theatre, Safeway, The United Way, Wells Fargo, and many others.

**VICKIE ROZELL** (Dramaturg) has been TheatreWorks' resident dramaturg for ten seasons, working on over 80 productions including as co-director/dramaturg on *Doubt*, *Arcadia*, and *Wrong for Each Other* and associate director/ dramaturg for *Yellow Face*; *Caroline, or Change*; *M Butterfly*; *Into the Woods*; *Dolly West's Kitchen*; *Shakespeare in Hollywood*; *Jane Eyre*; *Ragtime*; *Pacific Overtures*; *Side Show*; and *Floyd Collins* among many others. She has directed *Picnic*, *Picasso at the Lapin Agile*, *The Little Foxes*, and *Ladies of the Camellias* (Palo Alto Players); *Wit* (Bus Barn Stage Company); *Proof* (City Lights Theatre Company); *CTRL+ALT+ DELETE* (Pear Avenue Theatre), and *The Vagina Monologues* (California Theatre), taught at Ohlone and Foothill Colleges, is a member of the West Coast Director's Lab, has BAs in English and Psychology from Stanford University, and an MFA in directing from the University of California.

**ROBERT KELLEY** (Artistic Director) is a Bay Area native and Stanford University graduate. He founded TheatreWorks in 1970 and has been its Artistic Director ever since. He has directed over 150 TheatreWorks productions, including many world or regional premieres. He has received the Bay Area Theater Critics Circle Paine Knickerbocker Award for lifetime achievement, BATCC Awards for Outstanding Direction for his productions of *Into the Woods*; *Pacific Overtures*; *Rags*; *Sweeney Todd*; *Another Midsummer Night*; *Sunday in the Park with George*; *Jane Eyre*; and *Caroline, or Change*; Bay Area Drama-Logue Awards for his direction of *Ah, Wilderness!* and *Once in a Lifetime*; Dean Goodman Choice Awards for *Violet*, *Ragtime*, *Proof*, *Dolly West's Kitchen*, and *Harold & Maude*; and Back Stage West Garland Awards for his direction of *Side Show* and *Sunday in the Park with George*. He recently directed *The Secret Garden*, *Sense and Sensibility*, *Snow Falling on Cedars*, *The 39 Steps*, and *A Christmas Memory*.

**PHIL SANTORA** (Managing Director) joined TheatreWorks in 2007 after spending four years as Managing Director of Northlight Theatre outside Chicago. Prior to working at Northlight, he was Managing Director of Georgia Shakespeare Festival (GSF) in Atlanta, as well as Development Director for Great Lakes Theatre Festival in Cleveland and George Street Playhouse in New Brunswick, New Jersey. He holds an MFA in Theater Administration from the Yale School of Drama and a BA in Drama from Duke University. Mr. Santora serves on the Board of the National Alliance for Musical Theatre and has served on the boards of the League of Chicago Theatres, the Atlanta Coalition of Theatres, and the executive committee of the League of Resident Theatres (LORT). He was named 2000's Best Arts Administrator by *Atlanta Magazine* and received the Atlanta Arts and Business Council's 1998 ABBY Award for Arts Administrator.